



SMART CONTROL CENTERS - BY HARMONY SYSTEMS



ABOUT HARMONY



Harmony Systems is provider of integrated Commercial Furniture Solutions under one roof, with a professional approach to design, supply, and site execution.

Custom build solutions tailored to the customer's operational needs can be provided by a professional team of in-house product designers, project managers, and electrical engineers from various fields.

		<i>Design & Engineering Scope</i>	<i>Project Execution Scope</i>
1999	Establishment of the Company (70,000 Sq. ft. Manufacturing Area)	<ul style="list-style-type: none">• Layout	<ul style="list-style-type: none">• Project Planning
2008	Started Control Room Business	<ul style="list-style-type: none">• Product Design	<ul style="list-style-type: none">• Supply
2017	Establishment of Chair manufacturing unit	<ul style="list-style-type: none">• Mechanical	<ul style="list-style-type: none">• Quality Control
15+	International Certifications	<ul style="list-style-type: none">• Electrical• Ergonomic Consultation• Compliance to international Norms	<ul style="list-style-type: none">• Packaging & Forwarding• Warranty & AMC



In-house end-to-end

MANUFACTURING FACILITIES

equipped with state-of-the-art
machinery

70,000 Sq. ft. Manufacturing Area



PAN-INDIA

installations



5 WEEKS

delivery time



NANO-TECH

powder coating



15+ INTERNATIONAL

certifications



more than 45,000

INSTALLATIONS



HARMONY'S MANAGEMENT SYSTEM AND PRODUCT CERTIFICATIONS



Tested for hazardous substances by an independent authority, and the tests confirmed levels of the substances below the RoHS threshold



Consoles are designed on ergonomic principles, recommendations, and requirements for the design of workstations for in control centers.



BIFMA X5.5 Compliant means furniture products that conform to BIFMA safety and durability standards. Compliant provides clarity to the market by differentiating products that meet established industry standards



All the Finishes were assessed for surface burning characteristics and Flame Spread of the Control center products



FSC certification ensures that products come from responsibly managed forests that provide environmental, social and economic benefits.



The Consoles have been tested and certified by the Government's Lab "Central Power Research Institute" for Seismic Zone 5 as per IS 1893 standard

GREENGUARD

By choosing products with GREENGUARD and GREENGUARD GOLD Certification, you are creating a healthier Control room indoor environment and reducing chemical exposure. GREENGUARD Certification Standards are among the most rigorous in the world. It is in compliance with BIFMA M7.1.

GREENGUARD GOLD

The certification program is recognized and referenced in numerous building programs, standards, and specifications around the world. Products with GREENGUARD or GREENGUARD Gold Certification will contribute to points in green building rating systems, such as LEED, BREEAM, Fit well and others, and satisfy code or ordinance criteria to meet indoor air quality requirements.

EPD

An Environmental Product Declaration (EPD) and Life Cycle Assessment (LCA) is the life cycle story of a product. The EPD provides information about a product's impact on the environment, such as global warming potential, smog creation, ozone depletion, and water pollution. In accordance with ISO 14025.



Consoles have been tested and certified by UL on International safety and performance standards against the safety of Mechanical Failure, Electrical Hazards, and Fire safety. Products that are UL certified are safer and better choices than those that are not.

Harmony's Management System Compliances



ISO 9001



ISO 14001



ISO 45001



ISO 50001



CUSTOMERS



Government



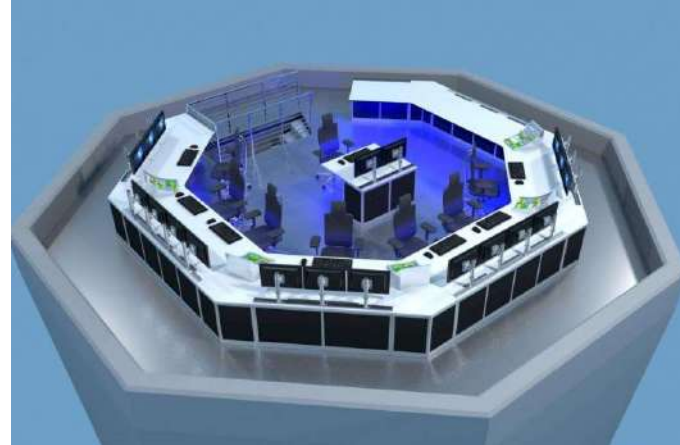
Private Sector



PRODUCT RANGE



Control Room Consoles



Airport Consoles



Ergonomic Seating



Control Room Interior



Conference Tables



Modern Office Workstations



CONTROL ROOM CONSOLES – X-ELITE Standard & Custom Desks



A - Series



C - Series



E - Series



F - Series



Multi Monitor with Rack



Custom - Series

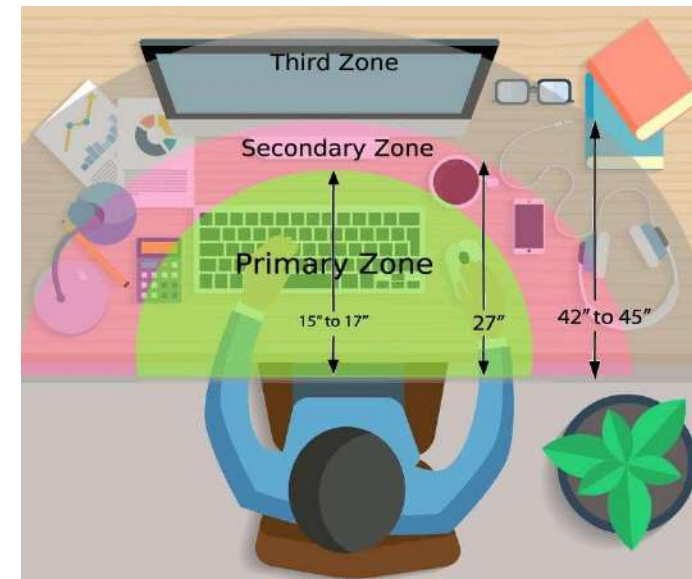
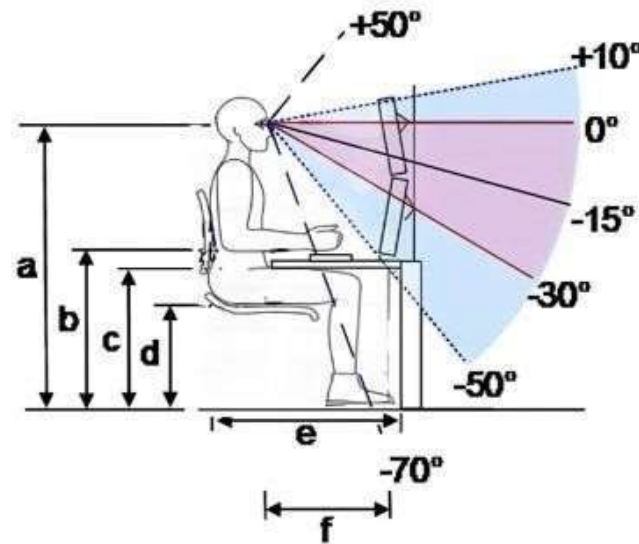
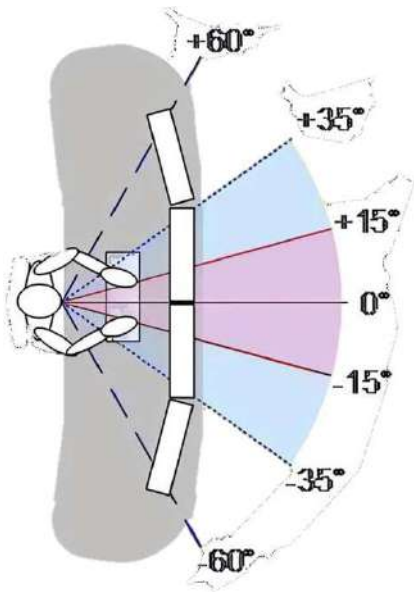


The control room is a key area of the business, and operators must be vigilant at all times. Harmony Systems created the console in accordance with Ergonomic standards **ISO 11064 / HFDS** / Relevant Doc & country specific anthropometric data to achieve the maximum output.

All **X-ELITE** range standard and custom designs are reviewed to ensure that they fulfil ergonomic standards and provide the best product for the user to work productively without tiredness for continuous and concentrated sitting on ISO 11064 compliant product.

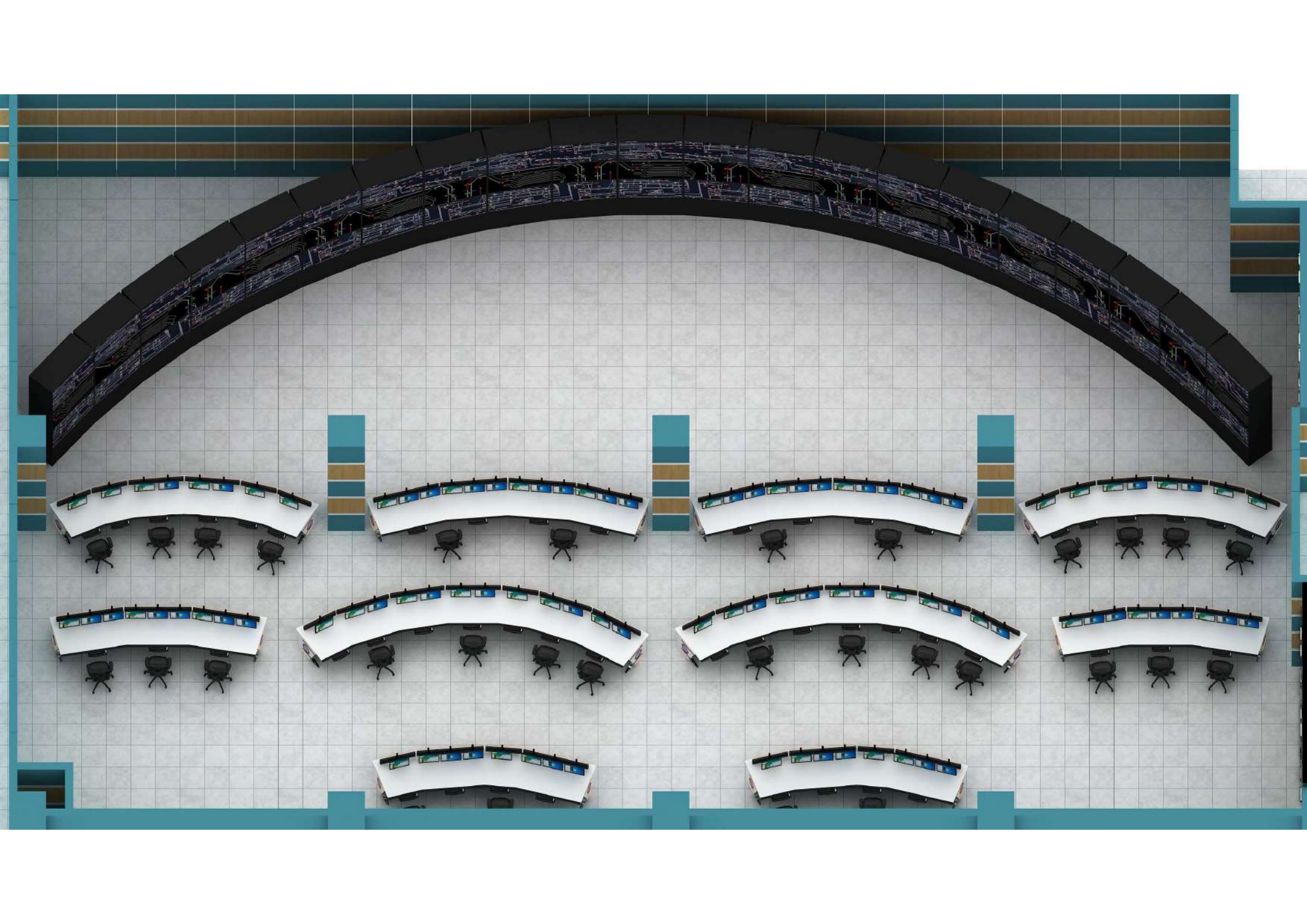
Our professional design team validates the product design dimensions of crucial places such as working height, reach zones, knee space, foot space, viewing angles, equipment positioning, and electrical design, among other things.

On request, a third-party ergonomic compliance report can be provided.





Control Room Console
X-ELITE – A series



Control Room Console

X-ELITE – A series





Control Room Console

X-ELITE – C series





Control Room Console

X-ELITE – C series





Control Room Console

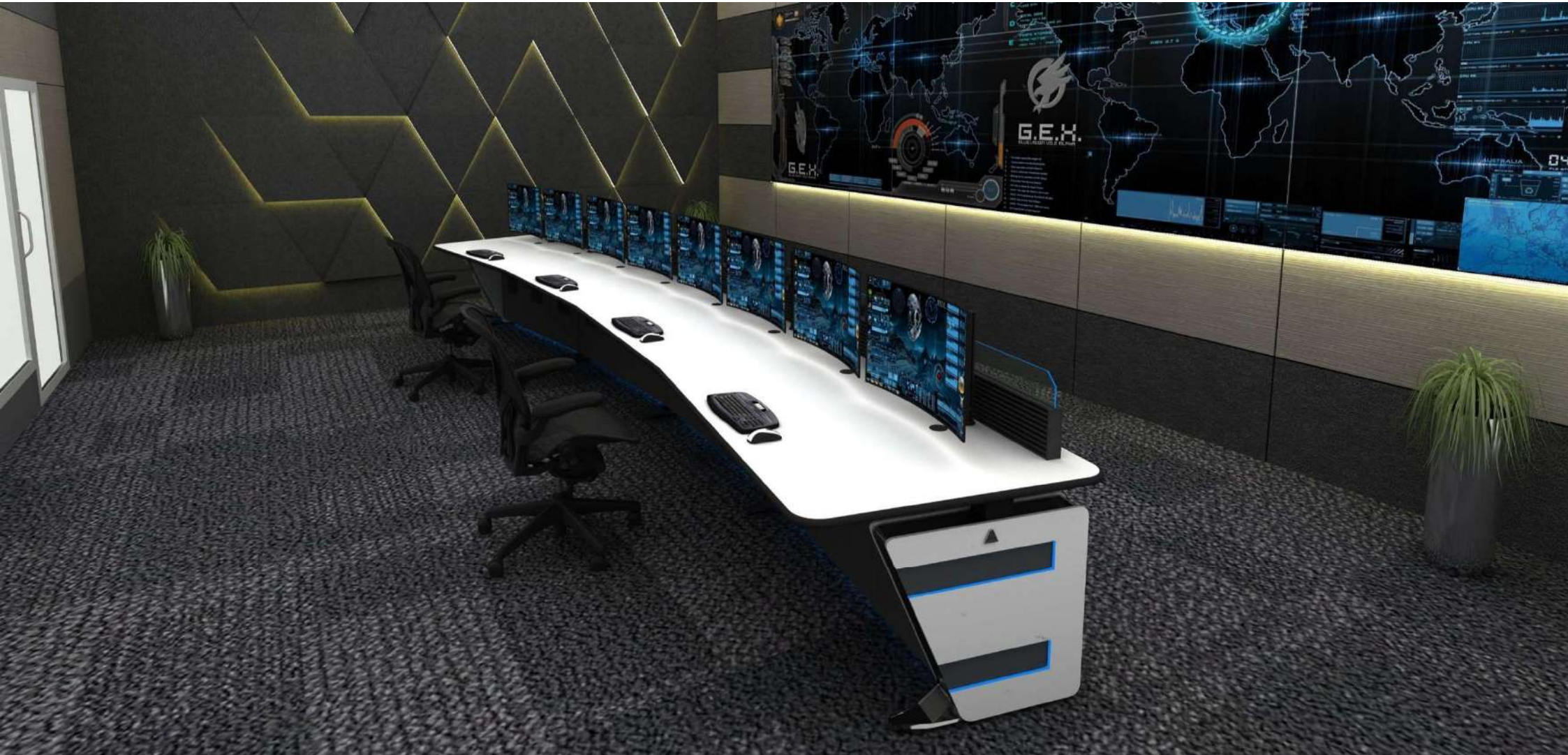
X-ELITE – E series





Control Room Console

X-ELITE – E series





Control Room Console

X-ELITE – E series





Control Room Console

X-ELITE – E series





Control Room Console

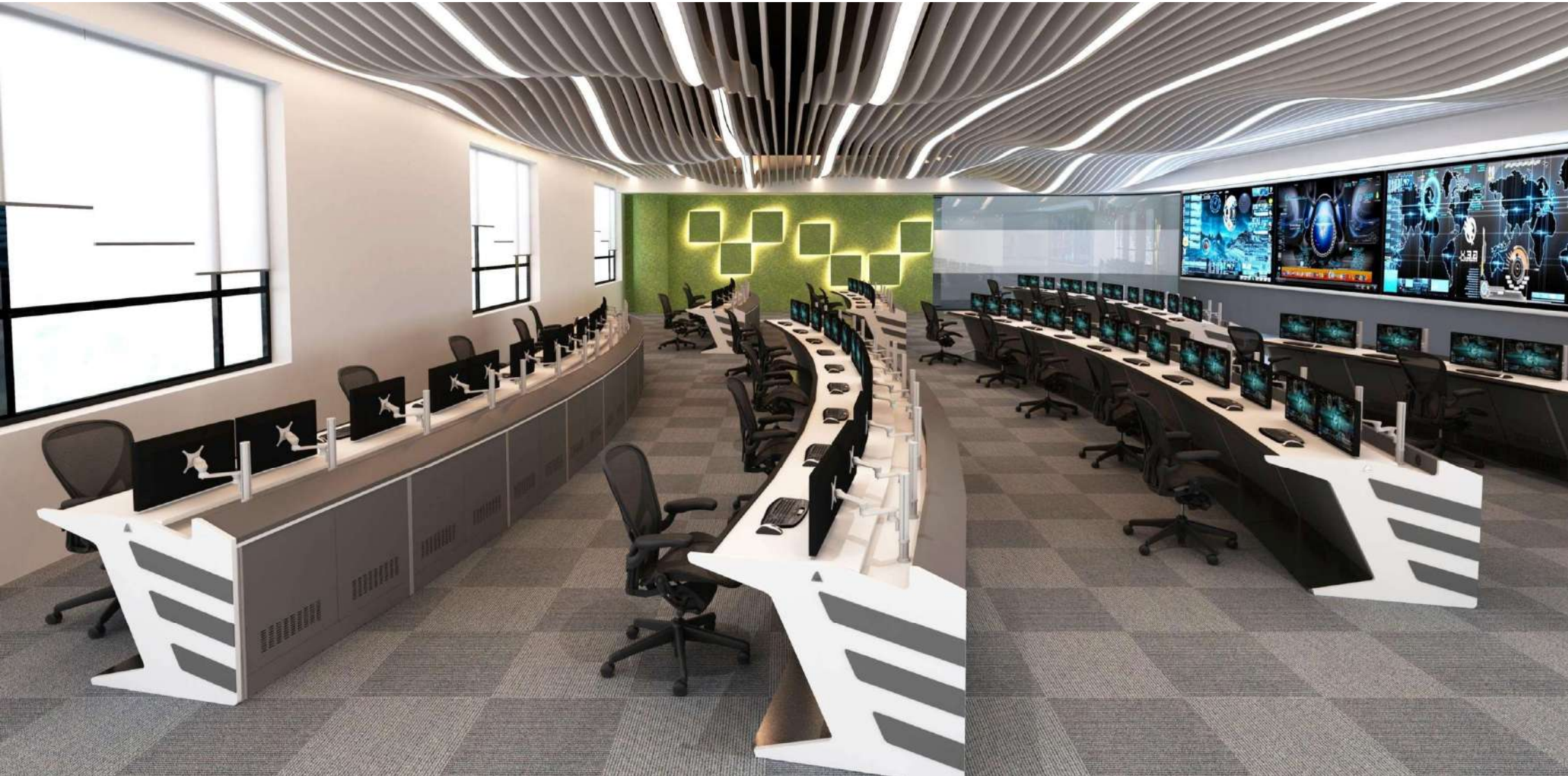
X-ELITE – F series





Airport Consoles

X-ELITE – F series





Airport Consoles

X-ELITE – F series





Custom Consoles



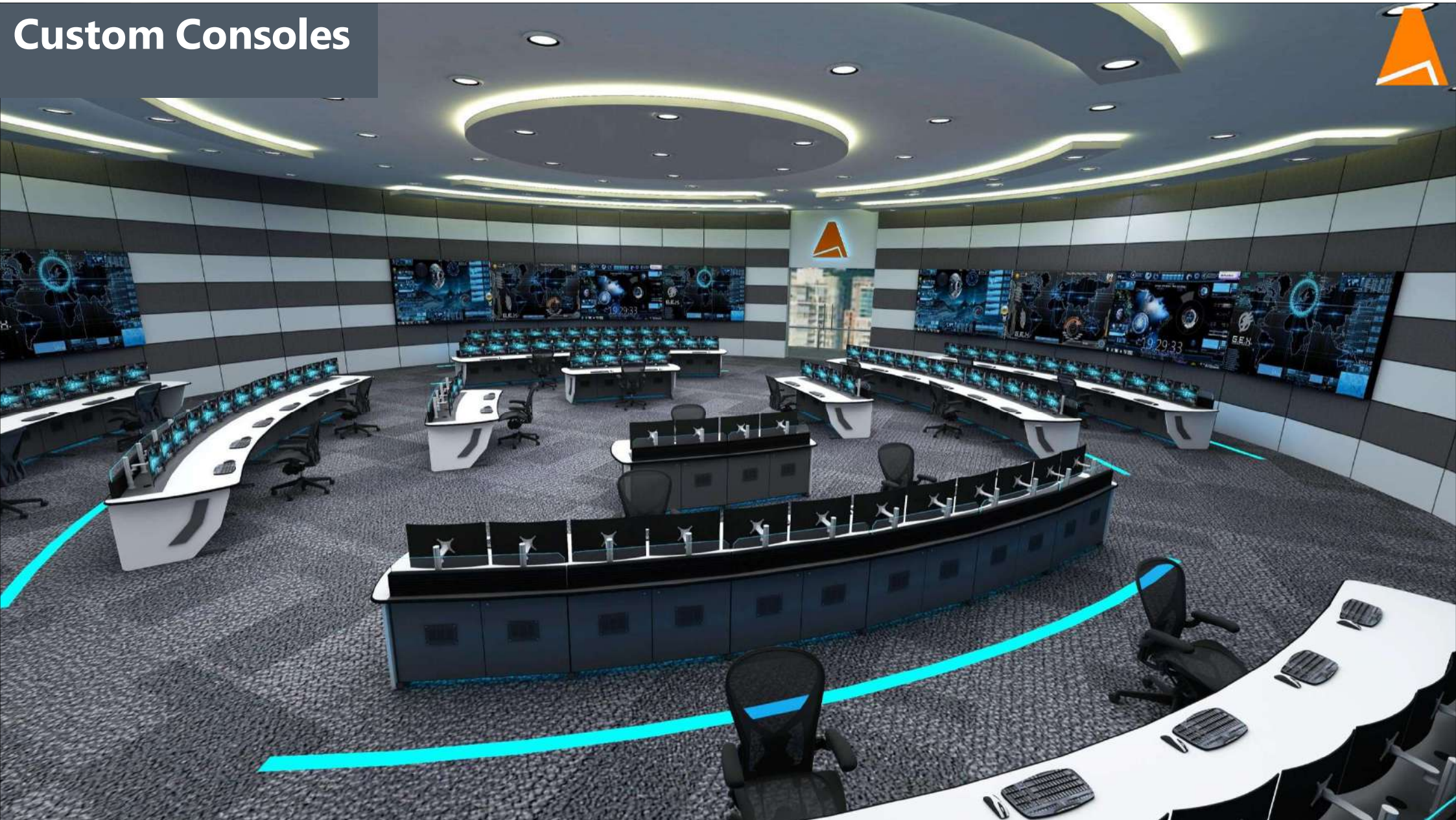
Custom Consoles



Custom Consoles



Custom Consoles



Airport Consoles

X-ELITE - ATC



Airport Consoles X-ELITE - ATC



Airport Consoles X-ELITE - ATC





MULTIFUNCTIONAL AND LOADED WITH FEATURES



1. Single lever adjustment
2. Seat depth adjustment
3. Automatic lumbar support
4. Tension control
5. Synchro-tilt mechanism
6. Seat height adjustment
7. Arm height, depth & swivel adjustment
8. Tilt lock
9. Waterfall seat
10. Back height adjustment
11. Optional headrest with



24x7 Ergonomic Chair for Operators – Focus Series



High Back Chairs



HMV -2115



HMV -2117



HHF -2306



HHB -2226

Mid Back Chairs



HMV -2116



HMV -2118



HMF -2307

24x7 Ergonomic Chair for Operators – Focus Series and Sofa



High Back Chairs



HHF -2310



HHF -2314



HHF -2308



Mid Back Chairs



HMF -2311



HMF -2315



HMF -2309



HLD - 2422



HMD - 2402

X-ELITE – CONFERENCE TABLES



X-ELITE premium series Conference Tables built with the various USPs -

- ✓ Ergonomically Designed
- ✓ Cushioned front PU Edge on the user side
- ✓ Best quality materials
- ✓ Custom Designs
- ✓ Available in Premium finishes
- ✓ Prewired for plug-and-play Electrical circuit
- ✓ High Scratch Resistance

Inbuilt popup screens (Optional)



Best Quality Raw Materials Processed on Best-In-Class Machines



Highspeed Edge Band

We use materials from the Best-In-Class companies like Merino, Greenlam, Wilsonart USA, Rehau Germany, Heavy duty Aluminum from Jindal etc.

100% In-house Manufacturing



Highspeed Board Cutting

To ensure high quality, accuracy and reproducibility, All these materials are processed on Best-In-Class machinery installed at Greater Noida Factory in 75,000 Sqft area



Fully Automatic CNC cutting



Sheet Metal Cutting Laser with pipe cutting attachment



Sheet Metal Bending

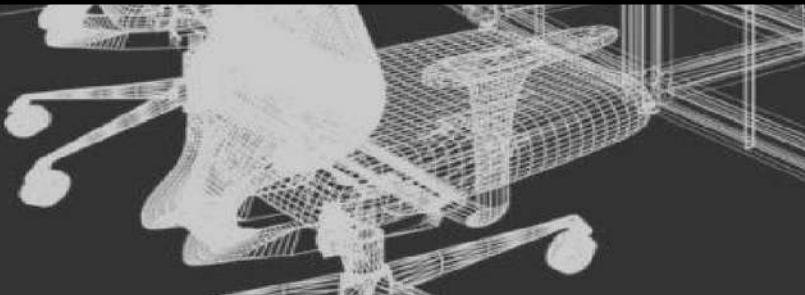
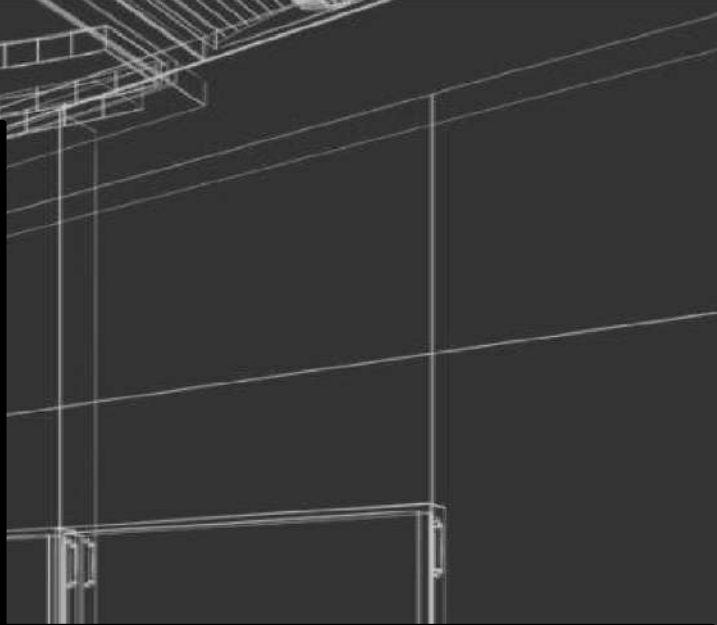


Projects Executed



Gas Authority of India Limited, Noida

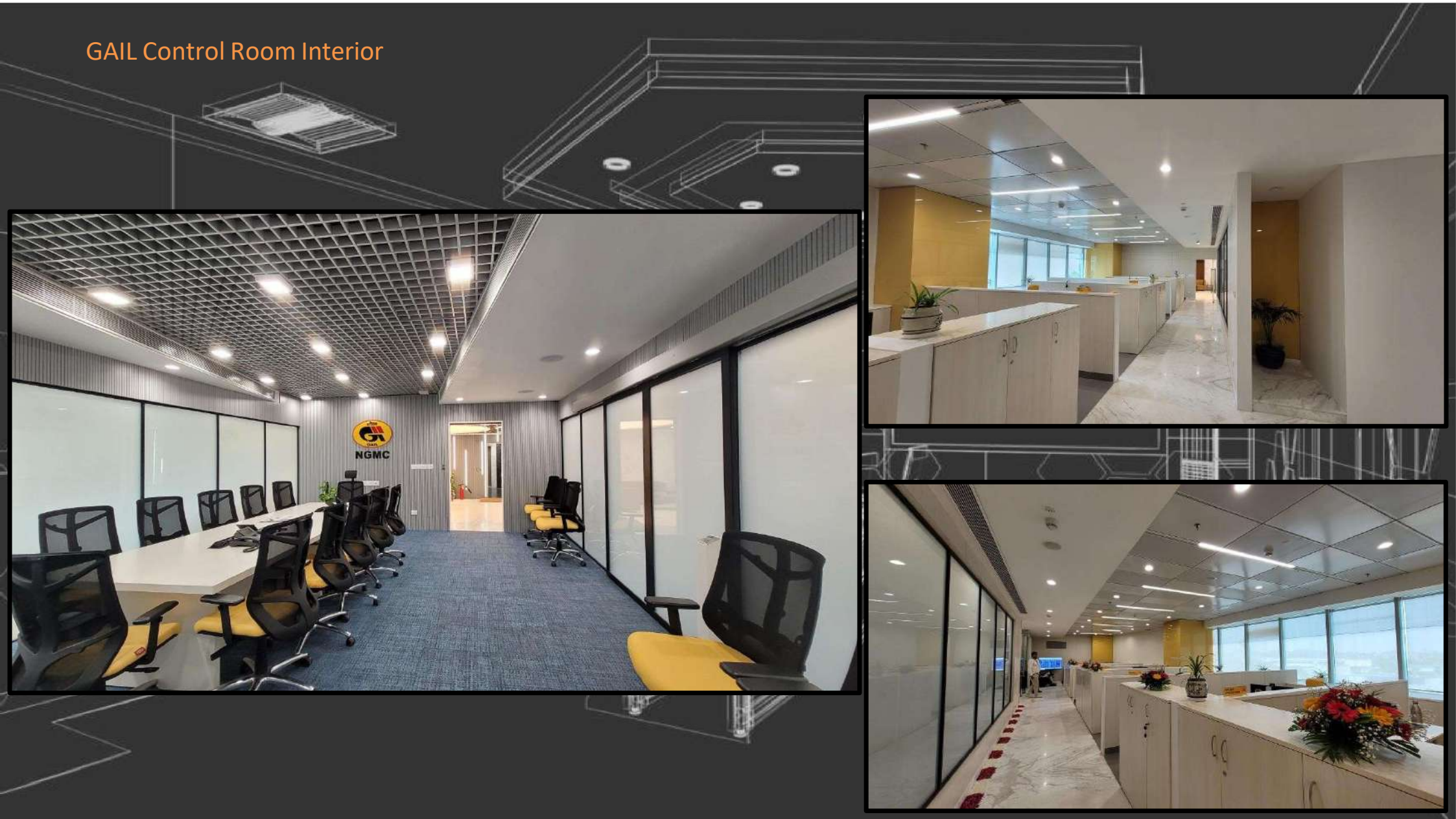
GAIL Control Room Interior



GAIL Control Room Interior

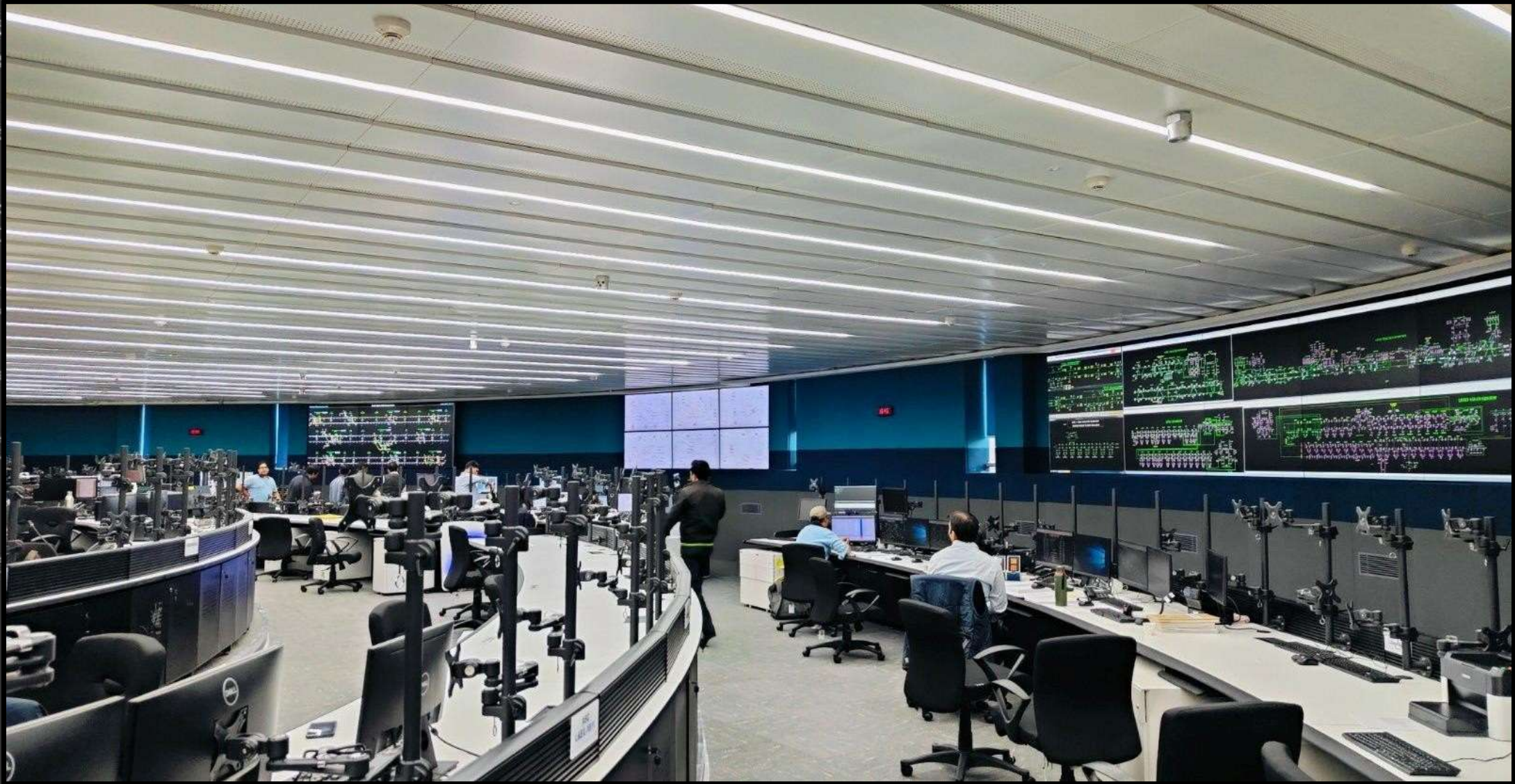


GAIL Control Room Interior



NGMC

DMRC, 3rd Floor OCC Interior, Metro Bhavan



HYDERABAD METRO UPPAL CONTROL ROOM



HYDERABAD METRO UPPAL CONTROL ROOM





**Trains running on three corridors
are controlled & monitored from the
state of art Operation Control Centre (OCC) at Uppal**

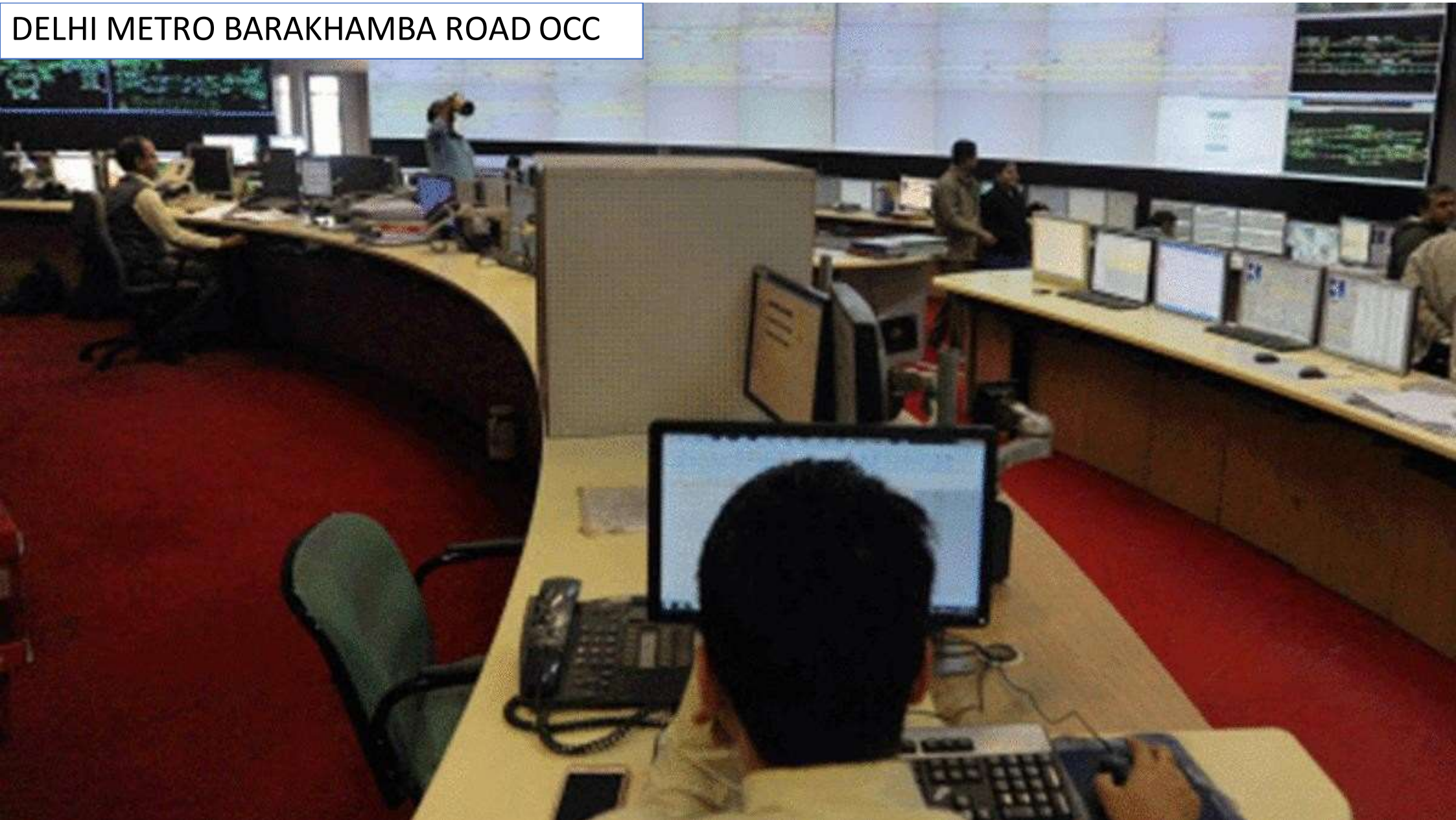
JAIPUR METRO CONTROL ROOM



DELHI METRO BARAKHAMBA ROAD OCC



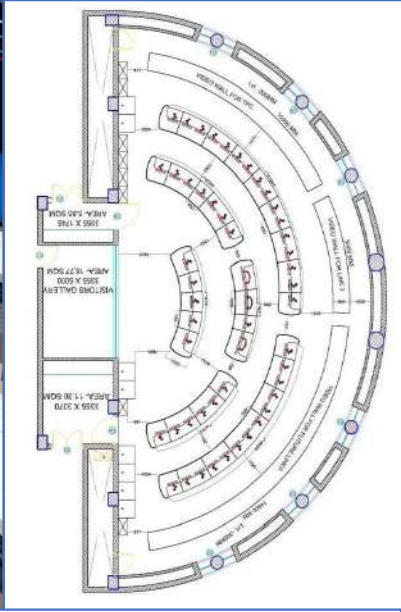
DELHI METRO BARAKHAMBA ROAD OCC



DELHI METRO BARAKHAMBA ROAD OCC



And Station control desk of Phase 1



And Shastri park Extension

DELHI METRO SHASTRI PARK (Part of the Project)



DELHI METRO SHASTRI PARK (Part of the Project)



Excise Dept, Bhopal



Executed Order List of Harmony Systems

S.No	Project/Package	Industry Type	S.No	Project/Package	Industry Type	S.No	Project/Package	Industry Type	S.No	Project/Package	Industry Type
1	Yumn Ltd, Africa	Export	31	NLC Neyveli	mining	61	Koranpatti Substation Tireneltveli	Power	91	Siemens Ltd.	Power
2	BIFPCL Maitree, Bangladesh	Export	32	NMDC Iron & Stell Plant Chhattisgarh	mining	62	KPCL Raichur	Power	92	Simhadri Power	Power
3	Nepal NEA Project	Export	33	NSPL Rourkela	mining	63	KPTL Senegal	Power	93	TANGEDCO Tuticorin, North Chennai	Power
4	Bihar Cement Ltd Aurangabad Bihar	Cement	34	BPCL	Oil & Gas	64	Krishnapatnam (1X800 MW) AP	Power	94	Tantransco	Power
5	Dalmia Cement Belguam, Kadapa Andhra Pradesh, Meghalaya, Sundargarh West Bengal, USO Assam	Cement	35	CPCL Manali Tamil Nadu	Oil & Gas	65	KSK Energy Chhattisgarh	Power	95	TATA Power Delhi	Power
6	Dolvi Project	Cement	36	FGD For Dadri	Oil & Gas	66	L& T Kolkata	Power	96	Techno Solution Noida	Power
7	Duratech Cements India Ltd.	Cement	37	Gail Control Room Noida	Oil & Gas	67	Lalitpur STPP – WTP & HVAC Package	Power	97	Tiroda Thermal Power Project	Power
8	GE T & D India Ltd Kolkata, Noida, Chennai	Cement	38	HPCL Mumbai	Oil & Gas	68	Lower Jurala Hydro Electric Project	Power	98	TSGENCO Kothagudam, Yadadri	Power
9	Karnataka Cement Project Kodla	Cement	39	IOCL Paradeep	Oil & Gas	69	Mahagenco Koradi	Power	99	TVNL Tenughat	Power
10	My Home Project	Cement	40	Metso Mumbai	Oil & Gas	70	Mambalam Tamilnadu	Power	100	UJVN Vyasi	Power
11	Shree Cement Aurangabad, Beawar,Raipur	Cement	41	ONGC Hazira Gujarat	Oil & Gas	71	Meil Kaleshwaram, Tuticorin	Power	101	UKAI R&M Unit 3&4	Power
12	Shree Raipur Cement Plant Raipur	Cement	42	Simon India Odisha	Oil & Gas	72	MPPGCL Birsingpur, Bhusawal	Power	102	UP Jal Nigam Store	Power
13	Ultratech Cement Ltd Kalamboli Mumbai	Cement	43	APGENCO Krishnapatnam	Power	73	MSW Project	Power	103	UPPTCL Shamli	Power
14	Ultratech Nathdwara Cement Ltd	Cement	44	Bhadradri Project	Power	74	Mukerian Project	Power	104	UPRVNL Obra, Panki (1 X 660 MW)	Power
15	UTCL Bela, Cuttack, Dalla, Dankuni, Dhar, Dhule, Hirmi, Jharsuguda, Maiher, Manikgarh, Pali, Raigarh, Rajashree, Sonar	Cement	45	BHEL – Multiple Projects	Power	75	Nabinagar STPP(3X660Mv) Bihar	Power	105	WBPDC Sagardighi	Power
16	Airforce Station	Defence	46	CCPP Pragati Delhi	Power	76	NEEPCO Khandong Hep Stage-II Restoration and Monarchak	Power	106	Delhi metro, Metro Bhawan	Railway
17	Delhi	Defence	47	CSEB Jagdalpur Chhattisgarh	Power	77	NHPC Kishanganga HEP, Parbathi HEP	Power	107	DFCCIL – Siemens	Railway
18	Gurgaon	Defence	48	CSPGCL Korba West	Power	78	Nimmo Bagzo And Chutak Hydro Plant	Power	108	Jaipur Metro, Mansarovar	Railway
19	Jaipur	Defence	49	CSPTCL Dhardehi, Kawardha & Dharsiwa (Chhattisgarh)	Power	79	North Chennai Stage III (1 X 800 MW)	Power	109	Hyderabad Metro	Railway
20	IIT Hyderabad	Education	50	CWRTL Morena Madhya Pradesh	Power	80	NTPC AUSC Talcher, Dadri, Darlipalli Odisha, Farakka, Gadarwara, Karimnagar, Mouda, Simhadri Maharashtra,Nabinagar, Pranahita Pkg 6 & 8, Tanda, Vishnugad, Unchachar, Vallur, Vindhyachal etc.	Power	110	New Manauri	Railway
21	Institute For Plasma Research Ahmedabad	Education	51	Damanjodi	Power	81	NSPCL	Power	111	Narshighpur – Thales	Railway
22	Sintex Infra	Infra	52	Gammon India Project	Power	82	NTTTPS R&M Ibrahimpatnam AP	Power	112	Amritsar Smart City	Smart City
23	Amararaja	mfg	53	GSECL – Wankabori TPS 1 X 800 MW	Power	83	OHPC Balimela	Power	113	Mars Development Kolkata	Smart City
24	Emami Agrotech West Bengal	mfg	54	Gurgaon Power	Power	84	OPTCL Bhubneshwar, Lapanga (Odhisia)	Power	114	Nahar Integrated System	Smart City
25	Hindalco Aditya Aluminium	mfg	55	Hakan Power Boiler Yumn Ltd. Rwanda	Power	85	Palaramu Stage - II & III	Power	115	Veracity Systems Surveillance Pvt. Ltd.	Smart City
26	Masyc Projects Pvt.Ltd. Jhajjar Haryana	mfg	56	HNPCL VIZAG	Power	86	PGCIL Kunta Andhra Pradesh	Power	116	Mahindra Susten Pvt. Ltd.	Solar
27	Maxxis India Sanand Gujarat	mfg	57	HPGCL Panipat Haryana	Power	87	PTCUL Padart	Power	117	Mahindra Teqo	Solar
28	Nalco R&M (2X120 MW)	mfg	58	IHPC Peipl	Power	88	Rajasthan State Electricity Multiple Sites	Power	118	JSW Steel Limited	Steel
29	NFL Bhatinda and Panipat	mfg	59	Kalpataru Power Pithoragarh	Power	89	RKM Powergen, Chennai	Power	119	TATA Jojabera	Steel
30	TIPL Ajmer Rajasthan	mfg	60	Koradi Power Project	Power	90	Schneider Electric	Power	120	TATA Steel Jhamshedpur Jharkhand	Steel



Contact Details...



C-45, FIRST FLOOR, PARSAVNATH PARADISE,
J.P. GARDEN ESTATE, MOHAN NAGAR,
GHAZIABAD -201007, NCR



3sspacesolutions@gmail.com



9910181045 , 9999249900